

# PLC2 >>>

## Polairis condenser

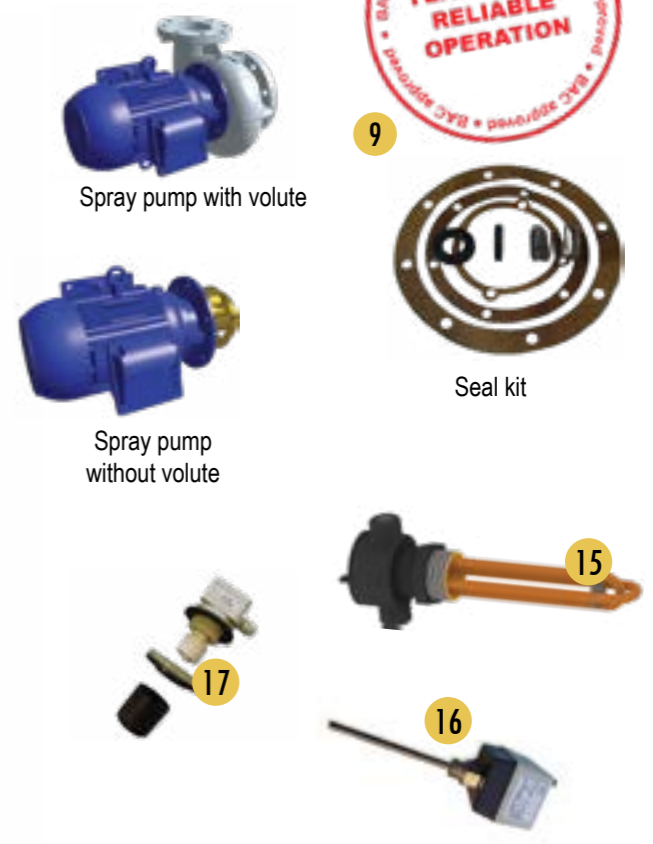


### Coil Casing Section

- i** 1. Drift eliminators
- i** 2. Spray branches
- i** 3. Spray branch grommets
- i** 4. Spray nozzles & nozzles grommets
- i** 5. Coil(s)
- i** 6. Upper pump piping
- i** 7. Sleeve & clamps

### Pan Fan Section

- i** 8. Lower pump piping
- i** 9. Spray pump  
with volute      without volute      seal kit
- i** 10. Strainer
- i** 11. DiamondClear™ Design Water capture system
- i** 12. Access louvers
- i** 13. Make-up valve & arm
- i** 14. Float ball
- i** 15. Heater
- i** 16. Heater thermostat
- i** 17. Low level cut out switch
- i** 18. Radial fan drive system
- i** 19. Fan guard
- i** 20. Fan inlet ring
- i** 21. Access door & gasket
- i** 22. Terminal box



Spare parts for condenser



**i** Only for previous generation models PLC 12. Combined inlet shields

### Client contact information

Name \_\_\_\_\_  
 Company \_\_\_\_\_  
 Telephone \_\_\_\_\_  
 Email \_\_\_\_\_  
 Unit model \_\_\_\_\_  
 Serial number \_\_\_\_\_



### Your BAC contact

Name \_\_\_\_\_  
 Telephone \_\_\_\_\_  
 Email \_\_\_\_\_



Radial fan drive system - Detail

Quantities may vary according to the unit type.

This is not an official order form.

