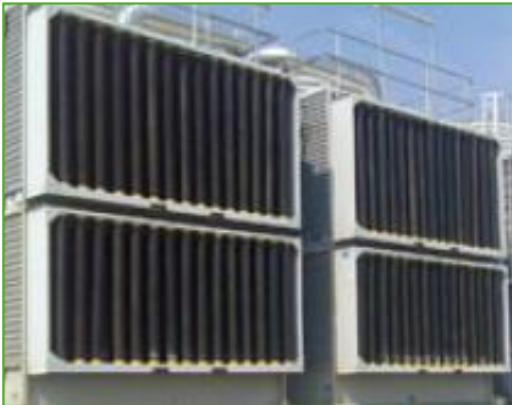


# Options and accessories

## Closed circuit cooling towers

### Options and accessories

Below is a listing of the main FXVT options and accessories. If your required option or accessory is not listed, look no further than your [local BAC representative](#).



#### Sound attenuation

Reducing noise at air **intake and discharge points** brings us closer to silent cooling equipment.



#### Whisper Quiet fan

Reduce fan noise even more with **very low sound factory-tested fans**.



### Gear drive system with close coupled motor

A close-coupled gear box for **more efficiency** and **less maintenance**.



### Gear drive system with externally mounted motor

A gear box with an external motor outside the air stream helps **improve efficiency** and **ease of maintenance**.



### Positive closure dampers

Use positive closure dampers (PCD) to **minimize the heatloss due to convection** by preventing air flow through equipment that is shut down.



### Internal service platform

An internal platform helping you **access the unit top inside** and safely inspect your cooling towers.



### External service platform

An external platform helping you **access the external unit top** and safely inspect your cooling towers.



### Basin heater package

Thanks to our factory-installed heaters, the water stays at 4°C and **never freezes**, even during equipments downtime and however cold it gets outside.



### Remote sump connection

The best way to **prevent a sump freezing** is to use the auxiliary remote variety within a heated area. Shutting off the circulating pump allows all the water in the water distribution, as well as that in suspension and the sump to drain freely to the auxiliary sump.



### Extended lubrication lines

Extended lubrication lines with easily accessible grease fittings can be used to **lubricate** fan shaft bearings.



### Electric water level control package

For **perfectly precise water level control**, replace the standard mechanical valve with our electrical water level controller.



## Mechanical equipment removal system

This **helps** you **remove or install** fan motors or gearboxes.



## Vibration cut out switch

When excessive vibration occurs, this switch shuts down the fan, ensuring your cooling equipment **operates safely**.



## Water treatment equipment

Devices to control water treatment are needed to ensure proper **cooling tower water care**. Not only does this help protect the components and fill pack, controlling corrosion, scaling and fouling, it also avoids the proliferation of harmful bacteria, including **legionella**, in the recirculating water.



## Sump sweeper piping

Sump sweeper piping **prevents sediment collecting in the cold water basin** of the unit. A complete piping system, including nozzles, are installed in the basin of the tower **for connection to side stream filtration** equipment.



## Filter

Separators and media filters efficiently **remove suspended solids** in the recirculating water, reducing system cleaning costs and optimizing water treatment results. Filtration helps you keep the recirculating water clean.



## Flanges

Flanges facilitate **piping connections** on-site.