



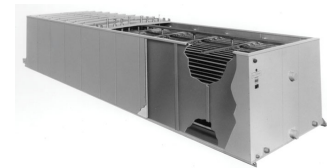
# Construction details

## Ice thermal storage

### Construction details

#### 1. Material options

- **Tank** is constructed of heavy-gauge hot-dip **galvanized steel** for unit steel panels and structural elements, all with welded seams. Tank includes high quality **insulation**.
- Insulated watertight tank covers and exterior tank panels featuring [Baltibond hybrid coating](#) .



#### 2. Coil

- The coil is constructed of continuous length of **prime surface steel**, hot-dip galvanized after fabrication. Designed for maximum 10 bar (glycol ) or 22 bar (ammonia) operating pressure according to PED.
- Coils are delivered with BAC's **Internal Coil Corrosion Protection**, to ensure an optimal internal corrosion protection and guaranteed quality.

#### 3. Construction

- Factory assembled construction (except air pump).
- **Air distribution system** consists of multiple **perforated PVC pipes** and **air pump**.
- **Ice logic ice thickness controller (option)**: sensor on coil for deactivation of refrigerant compressor at full ice build.

Like to know more about the TSU-C/D construction details? Contact your [local BAC representative](#).