

# Options and accessories

## Closed circuit cooling towers

### Options and accessories

Below is a listing of the main VFL options and accessories. If your required option or accessory is not listed, look no further than your [local BAC representative](#).



#### Plume abatement coil

A finned discharge coil is installed in your cooling tower discharge and piped in series with the wet coil. This **reduces or eliminates plumes** and **extends the dry cooling capacity**.



#### Sound attenuation

Reducing noise at air intake and discharge points brings us closer to silent cooling equipment.

- The sound reductions obtained by HS sound attenuation are perfect for **residential** sound requirements.
- Heavy noise reductions can be achieved with HD sound attenuation, making it ideal for **rural** requirements.



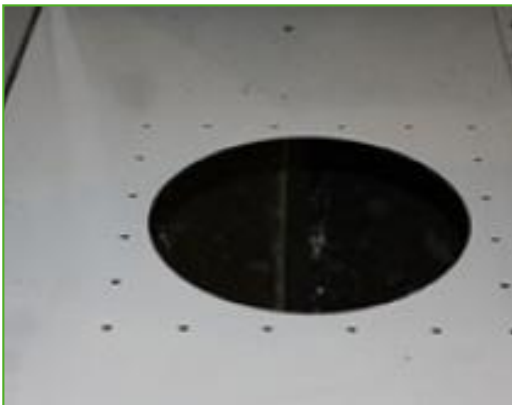
### Baltiguard drive system

With this, operate your system like a dual-speed motor, but with standby reserve capacity **to cope with any failure.**



### Basin heater package

Thanks to our factory-installed heaters, the water stays at 4°C and **never freezes**, even during tower downtime and however cold it gets outside.



### Remote sump connection

The best way to **prevent a sump freezing** is to use the auxiliary remote variety within a heated area. Shutting off the circulating pump allows all the water in the water distribution, as well as that in suspension and the sump to drain freely to the auxiliary sump.



## Electric water level control package

For perfectly precise water level control, replace the standard mechanical valve with our electrical water level controller.



## Discharge hood

Discharge hoods **reduce the risk of re-circulation** in tight enclosures by increasing discharge air velocity, and can be used to elevate the unit discharge above adjacent walls to comply with layout guidelines.



## Positive closure dampers

Use positive closure dampers (PCD) **to minimize the heatloss due to convection** by preventing air flow through equipment that is shut down.



### Steel drift eliminators

Steel drift eliminators are more **robust** than plastic alternatives.



### Safety switch

Cuts power to motors **with safety in mind** during inspection or maintenance.



### Clean out port

Clean out port **makes it easy to eliminate silt and sludge** from the cooling tower basin when cleaning and flushing the sump.



### Pump relocation

Move the pump to the connection side and make it **more accessible** when using sound attenuation at the fan side.



### Standby pump

Install a standby **reserve spray pump** as failure backup!



### Filter

Separators and media filters efficiently **remove suspended solids** in the recirculating water, reducing system cleaning costs and optimizing water treatment results. Filtration helps you keep the recirculating water clean.



## Sump sweeper piping

Sump sweeper piping **prevents sediment collecting in the cold water basin** of the unit. A complete piping system, including nozzles, is installed in the basin of the tower **for connection to side stream filtration** equipment.



## Water treatment equipment

Devices to control water treatment are needed to ensure proper **cooling tower water care**. Not only does this help protect the components and fill pack, controlling corrosion, scaling and fouling, it also avoids the proliferation of harmful bacteria, including **legionella**, in the recirculating water.



## Flanges

Flanges facilitate **piping connections** on-site.