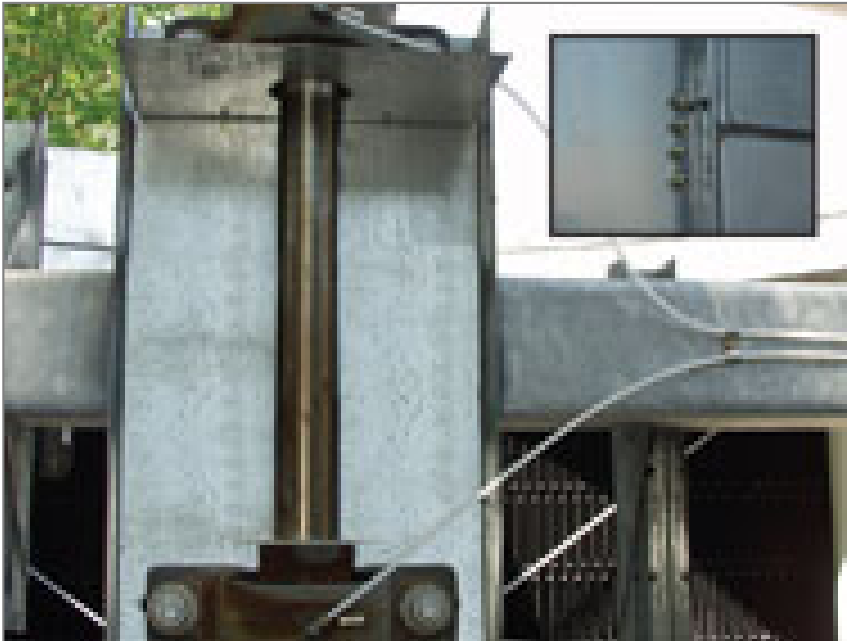


Previous generation products

## Options and accessories

### Extended lubrication lines



Extended lubrication lines with grease fittings can be used to lubricate fan shaft bearings. The fittings are located inside the plenum area next to the access door.

Installing extended lubrication lines:

- facilitates your year-round system maintenance
- increases your equipment reliability

### **Want to benefit from extended lubrication lines?**

Contact your [local BAC representative](#) for further information.