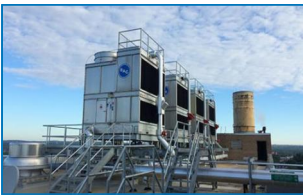




# S1500E

Open cooling towers



## Key benefits

- Extreme low sound levels matching centrifugal fan units with attenuation.
- Unmatched energy savings with less than 2 years payback.
- Low maintenance and easy inspection, 25% reduction in annual maintenance costs.

### S1500E characteristics

Cross flow, Axial fan, induced draft

### Capacity range

8 - 215 l/s

**40% more capacity**

### Water distribution

Gravity with **variable flow**

### Maximum entering water temperature

55°C standard fill

60°C with alternative fill

### Typical applications

- Medium HVAC and industrial applications
- Counterflow and crossflow unit replacements
- Tight enclosures
- Installations requiring a single air inlet



## Extreme low sound levels

- A choice of various fan types such as low noise axial fans and [Wisper Quiet fans](#) for minimal surrounding noise.
- [BACross fill](#) smoothly guides the water all the way into the basin **without water splash noise**.
- Single-side air inlet, and a **quieter tower rear** for more noise-sensitive areas.
- Try our **XES1500E line** with smaller motors for **extremely low noise** levels.
- Factory designed, tested and rated [sound attenuation](#) is available on air inlet to cut operation noise even further.

## Unmatched energy savings

- **Evaporative cooling** for system-wide energy saving at lower operating temperatures.
- **Axial fan uses half the energy** of similar centrifugal fan units.
- **Save pump kW!** Less pump head for this gravity water distribution system. In periods of reduced load, **weir dams** close off partly the hot water basin **saving pump energy**.
- [BACross fill](#) – factory-configured for maximum water/air contact and low air pressure drop for optimal cooling tower efficiency with limited energy consumption.
- **High efficiency fan motors**
- **Multiple fan motor system** covers independent fan motor and drive assembly per fan. In case of fan failure, the other fan(s) can still operate.
- **XES1500E line** with smaller motors to reduce electricity consumption for the same cooling capacity.

## Low maintenance and easy inspection

- Unrivalled safe and **comfortable access**. Inspect and maintain the tower **while standing** and without crawling.
- The S1500E has a **spacious plenum** (internal area) and **easy inspection/maintenance access**.
- Access via **large hinged** door. With optional [internal walkway](#): no basin draining needed for unit interior or fill pack inspection.
- Inspection of **water distribution system** (hot water basin and nozzles) possible outside the unit, during **operation**.
- Optional [distribution basin covers](#) prevent debris collecting in the unit.
- You can inspect and clean easily the core of the [BACross fill](#) **sheet by sheet without dismantling**. BACross design reduces fouling. Optional [telescopic fill supports](#) for easy replacement of the sheets.
- The fill includes integrated **drift eliminators** tested and certified by Eurovent.
- Self-cleaning cold water basin and fill above **sloped basin** to flush out dirt and debris.
- **Fans** are easily accessible from the in- and outside
- Optional [clean out port](#) **helps remove** silt and sludge from the cooling tower basin.
- Removable **suction strainer** anti-vortex hood.
- Optional [sump sweeper piping](#) prevents sediment collecting in the cold water basin.
- Various corrosion-resistant materials, including the unique [Baltibond hybrid coating](#) for guaranteed long service life.



- Optional [motor removal davit](#) for easy motor replacement.

## Superb hygiene control

- Proper hygiene inspection **without unit shut-down**.
- Easy-clean and easy-inspect S1500E towers **reduce hygiene risks** from bacteria (eg Legionella) or biofilm inside.
- Self-cleaning cold water basin and fill above **sloped basin** to flush out dirt and debris.
- [BACross fill](#) for reduced fouling and easy sheet by sheet cleaning without dismantling.
- The fill includes integrated **drift eliminators** tested certified by Eurovent.
- **Combined inlet shields** block sunlight to prevent biological growth in the tower, filter the air and stop water splashing outside.
- Optional [distribution basin covers](#) prevent debris collecting in the unit.
- Optional [clean out port](#) helps remove silt and sludge from the cooling tower basin.
- Optional [sump sweeper piping](#) prevents sediment collecting in the cold water basin.

## Ideal replacement unit

- **Single side air inlet and discharge**, fits in most enclosures.
- S1500E are **ideal replacement units**. Small fan motors and low spray pressure allow **re-use of existing electrical cabinet**.
- S1500E cooling towers are factory-built and shipped in 1 or 2 sections to reduce the overall size and weight, allowing **easy on-site section assembly** with smaller crane.

## Year round reliable operation

- Optimal unit condition thanks to **inspection during operation**.
- Proven **freeze free** winter operation.
- The thermal performance of S1500E is tested and [certified by Eurovent](#).
- **Multiple fan motor system** covers independent fan motor and drive assembly per fan. In case of fan failure, the other fan(s) can still operate.
- Various **corrosion-resistant** materials, including the unique [Baltibond® hybrid coating](#) for guaranteed long service life.

Interested in the S1500E cooling tower for cooling your process water? Contact your local [BAC representative](#).

## Downloads

- [S1500E open cooling tower](#)
- [S1500E Open Cooling Tower - brochure](#)



- [Operating and Maintenance S1500E](#)
- [Rigging and Installation S1500E](#)
- [Rigging and installation S1500E accessories and options](#)
- [Retrofit Opportunities for S1500E](#)
- [Spare Parts for S1500E](#)
- [BAC's S1500 open cooling tower is supporting the world's first hydrogen plant in steel production](#)