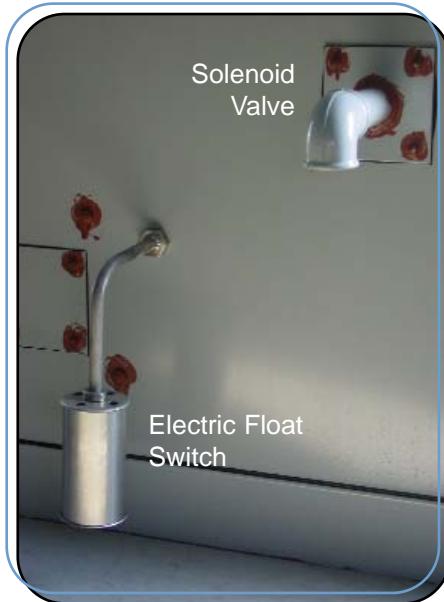


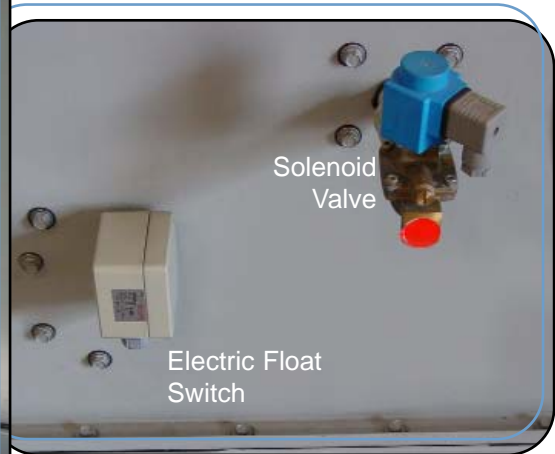
Electric Water Level Control Package



Internal view water basin



External view water basin



Product Report

Purpose

To maintain a constant water level in the cold water sump (with tolerance of ± 20 mm) independent of cooling load changes and water supply pressure variations.

Benefits

- + Less maintenance: no adjustment needed year-round.
- + Less sensitive to freezing than mechanical make-up systems.
- + Faster water level adjustment than with mechanical make-up systems.

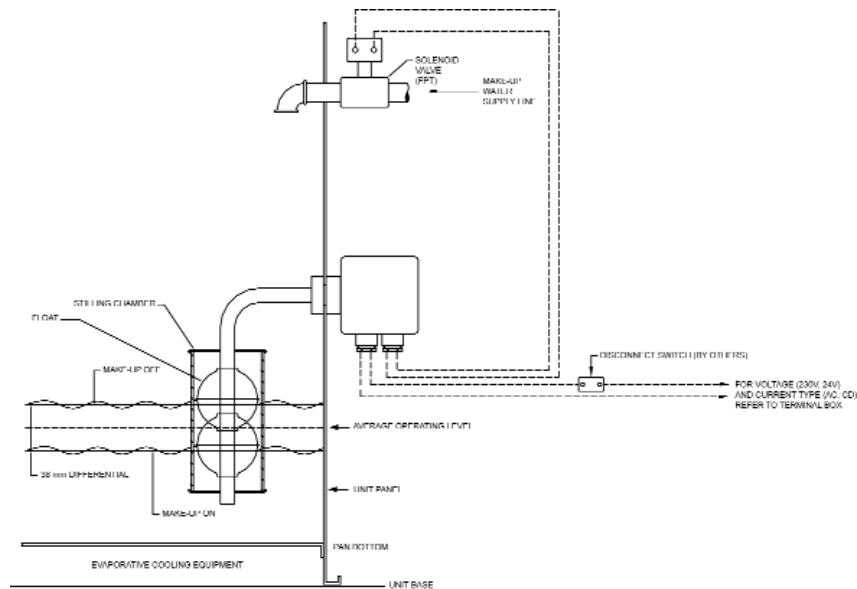
Application

- ✓ For improved year-round operation of evaporative cooling equipment, in particular in a freezing climate.
- ✓ For variable load applications.
- ✓ For use in areas with wide variations of water supply pressure.



Baltimore Aircoil

Principle of Operation



Description of Components



Electric Float Switch

- Electrical Float Switch with integrated stilling chamber and of complete stainless steel design.
- Standard connecting box suitable for 230V, 50Hz, single phase, AC.
- Single pole single throw switch.



Solenoid Valve

- Waterhammer damped solenoid valve of slow closing type
- Material of construction:
 - Brass Valve Body (Gunmetal for 2" valve)
 - Other metal components in stainless steel
 - EPDM gaskets
- Watertight enclosure IP 65.
- Connections are BSP female thread.
- Suitable for 230V, 50Hz, 10W, single phase, AC (other voltages available on request)
- Suitable for water pressures ranging from 0,3 - 10 bar.

For more information contact :

Baltimore Aircoil International N.V.

info-bac@BaltimoreAircoil.be

www.BaltimoreAircoil.com